



# RICE GROWING OUTLOOK REPORT

May 2024





## Rice Growing Outlook Report

May, 2024

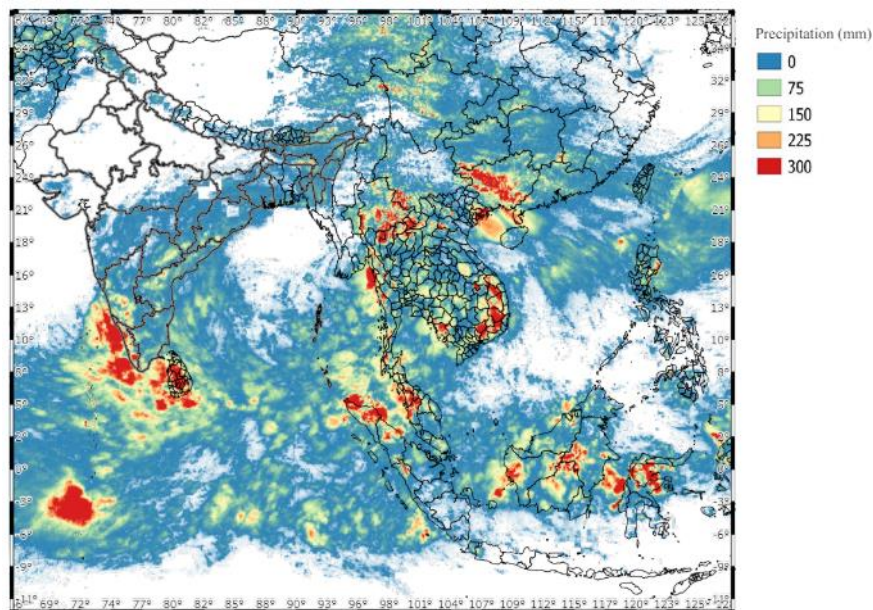
---

### Overview

In the Northern side of SE-Asia, the harvesting of dry season rice has almost completed. The final production is mixing conditions by country because the planted area of dry season has decreased due to inability to secure sufficient irrigation water in some countries. Additionally, some countries suffered damage due to drought. On the other hand, the wet season rice is in field preparation to seeding stage. The planting area is expected to increase due to high market price.

In the Southern side of SE-Asia, the harvesting of wet season rice is in final stage. The harvested area will decrease, but the yield is expected to increase due to enough irrigation water and favorable weather conditions during the growing season. On the other hand, the dry season rice is in seeding to early growing stage. The growing condition is generally good due to proper rainfall.

### Precipitation condition in early of May



This map is provided by Indian Space Research Organisation (ISRO) under the APRSAF/SAFE agromet project

<https://www.eorc.jaxa.jp/SAFE/project/agromet>

## **Brunei**

Dry season rice is currently in the planting stage. Main focus areas during the dry season are the irrigated areas, where about 30% of these areas have been planted. There have been some slight delays in planting due to the low precipitation from December to April. However, rainfall has been above normal in May and the remaining unplanted areas will be catching up to the planting schedule. Overall outlook for the rice growth is currently fair.

## **Cambodia**

The national planting plan this year is 2,65 million ha, but the current planted area remains at 4% of the plan due to the late start of the rainy season. This month is in seeding stage and the weather condition is suitable for crop growth with sunshine, although there is less planting than last year.

Generally, the early growing condition of wet season rice is good.

## **Indonesia**

This May is the fifth month of the wet season rice harvest, about 1.1 million hectares was harvested. The total harvested area had reached 4.7 million hectares, which is 8.1% lower than last year's wet season. Yield is expected to be similar to last year's wet-season rice due to sufficient irrigation water and sunshine during the flowering phase.

This May is also supposed to be the second month of dry season rice planting, and the total planted area reached 1.9 million hectares, which is 13.5% higher than last season. The high planting area is attributed to the intensification of rainfall. Most farmers began intensively planting wet season rice at the beginning of this dry season. Although heavy rainfall was recorded in some areas this month, no damage was reported due to these conditions.

## **Laos**

The dry season rice is in harvesting stage. The harvested area reached 62 thousand hectares accounting for about 68 % of the total planted area. Estimated final production is 450 thousand tons and the yield condition is estimated to be slightly decreased.

In generally, the weather condition in this season was good due to enough irrigation water and sufficient sunlight during the flowering season.

The national production plan for wet season rice in 2024 is approximately 841 thousand hectares, and now it is in land preparation time.

## Malaysia

The harvesting of wet season rice has been completed under good condition. The final yield is expected to be 4.4 tons/ha, which can be attributed to sufficient sunlight during the growing.

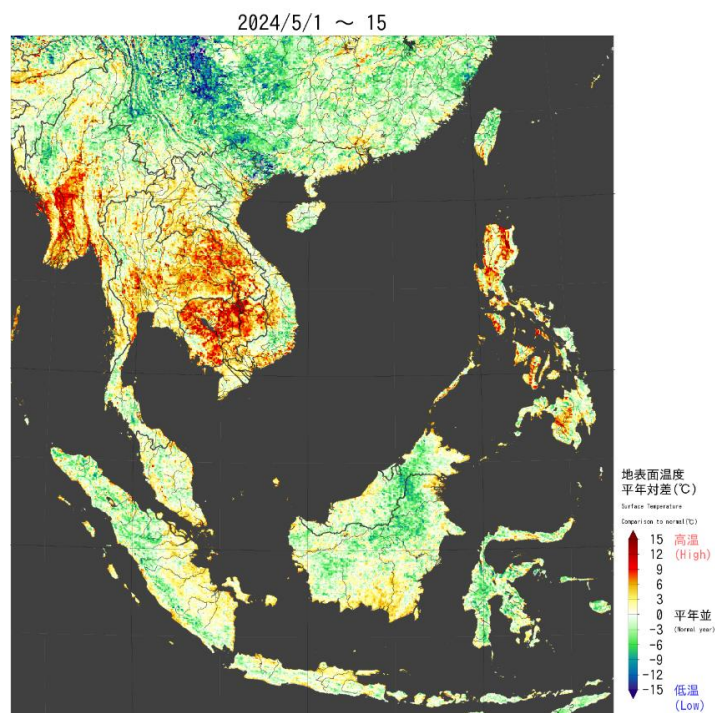
This May is the third month of planting of dry season rice and the planting progress is approximately 67% of the cultivation plan areas. Most of the growing stage is close to the maturity stage. The overall growing condition of dry-season rice is good since most regions are expected to experience normal rainfall.

## Myanmar

Up to this month, about 720 thousand hectares of the dry season rice that accounts for 65% of the total planted area of 1.1 million hectares has been harvested. It produced over 3.9 million tons of paddy, and the yield is 5.46 tons per hectare. It is a good yield and considerably higher than last year.

Although the current weather in Myanmar is extremely hot, the overall growing condition of the dry season rice is good, and the harvesting work is going well too.

This month, the wet season rice is in the field preparation time.



JASMAI Surface temperature difference anomaly map: Myanmar is extremely hot

## **Philippines**

Dry season rice planted in November – December was completely harvested. The paddy production of rice was estimated at around 4.69 million metric tons, indicating a decrease of 2.0 percent compared to last year's level mainly due to insufficient rainfall and adverse effect of drought/dry spell to most part of the country. Likewise, area harvested and yield also decreased by 0.1 percent and 1.8 percent, respectively.

Preparation and planting of wet season rice has already started. The rainfall condition will likely be below normal in most parts of the country.

## **Thailand**

The harvesting of dry season rice is almost complete, with a forecasted production decrease of about 10% compared to last year. This reduction is attributed to decreased planting area and drought conditions.

The wet season rice is in the field preparation time and farmers started to sow rice seeds in some areas. Many farmers have expanded their planted areas, driven by the expectation of high produce prices. Consequently, the planting area is forecasted to increase.

## **Vietnam**

In the North of Vietnam, the winter-spring rice (dry season rice) is in the young panicle forming to grain filling stage. The yield is forecast to increase due to favorable weather and enough irrigation water supply.

In the South, the winter-spring rice (dry season rice) is in the harvesting stage. The harvested area of dry season rice reached 1.69 million hectares out of 1.89 million hectares planted. The yield on the harvested area reached 6.94 tons per hectare, down 0.05 tons/ha compared to the same period in 2023 due to the influence of saltwater intrusion in the Mekong Delta. On the other hand, the summer-autumn rice (wet season rice) in the South is at the peak of seeding with a sown area of 0.64 million hectares, equal to 124.4% of the same period last year.

\*JASMAI is an open and free system

<https://jasmai.maff.go.jp/en/>